

# Pro Series Sump Pumps



## PRO SERIES Pumps:

Designed for high pumping capacities, energy efficiency, and reliability.

- Industrial strength for the residential market.
- Built to run continuously, 24/7/365.
- Harmonically balanced, quiet operation.
- Water cooled motors (no cooling oil).
- Double and triple seals to ensure longer life.
- External connections for easy tie into security or home systems.



## GOOD

### ST Series: 1/3 or 1/2 HP Sump Pump

- Energy Efficient
- 2770 GPH\* or 4320 GPH\*
- Cast Iron / Cast Aluminum
- 3 year warranty.



## BETTER

### PS-C22: Combination System Primary Pump and Backup Pump

- Combined primary and backup system.
  - Primary pump - 2770 GPH\*
  - Backup pump - 1850 GPH\*
- Battery Backup
- 3 year warranty.



## BEST

### PS-C33: Combination System Primary Pump and Backup Pump

- Combined primary and backup system.
  - Primary pump - 3000 GPH\*
  - Backup pump - 2400 GPH\*
- Battery Backup
- Two dual float switches for reliability
- 4 year warranty.



[NewHopeKitchenAndBath.com](http://NewHopeKitchenAndBath.com)

[SafeBasementsInc.com](http://SafeBasementsInc.com)

\*GPH is calculated at a 10' vertical distance from the pump.

# SafeBasements™ Sump Baskets

## SafeBasements Waterproofing Sump Baskets:

Designed for quality and ease of use. Each basket includes.

- Large hinged openings for easy access
- See-through polycarbonate lid
- Easy open 1/4 turn hardware
- Lifetime manufacturers warranty
- Impact resistant
- Radon sealed

## CRAWL SPACE

For Small spaces

- 18 Gallon Capacity
- Designed for Crawl Spaces
- 19.25H" (assembled) x 19 W" (Top diameter) x 11.25 H" (Collapsed)

Photo shows basket Collapsed



Authorized Dealer:



**New Hope Kitchen & Bath**  
Basement Waterproofing • Home Remodeling

5667 York Rd., Lahaska, PA 18938  
Mobile: 215-208-8703, Showroom: 267-544-0206  
[www.NewHopeKitchenAndBath.com](http://www.NewHopeKitchenAndBath.com)

## ECONOMY

The Traditional

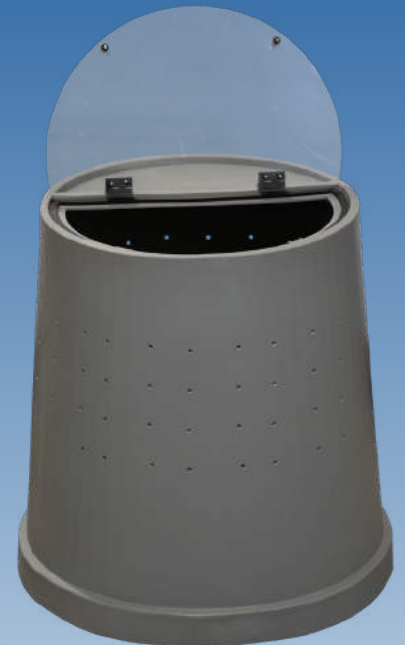
- 24 Gallon Capacity
- For a classic feel
- 24"H x 16" base dia. x 19" top dia.



## STANDARD

The Future

- 33 Gallon Capacity
- Large capacity minimizes short cycling
- Oval bottom accommodates multiple pumps.
- Wide base keeps things in place
- 24" H x 18.5" top dia. x 21" - 23" bottom



[SafeBasementsInc.com](http://SafeBasementsInc.com)